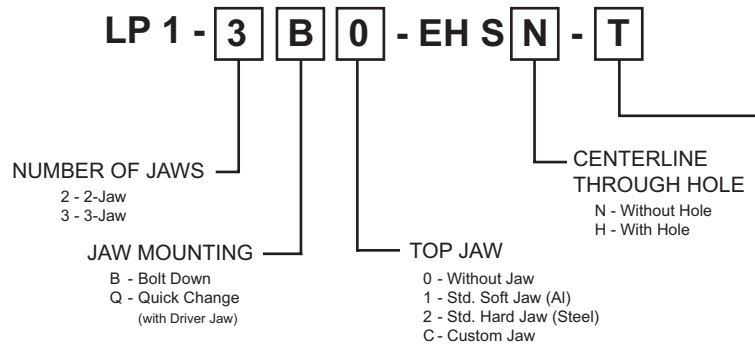


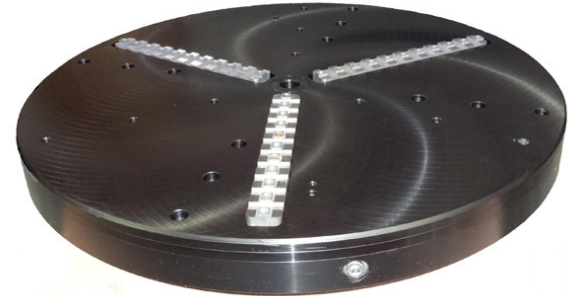
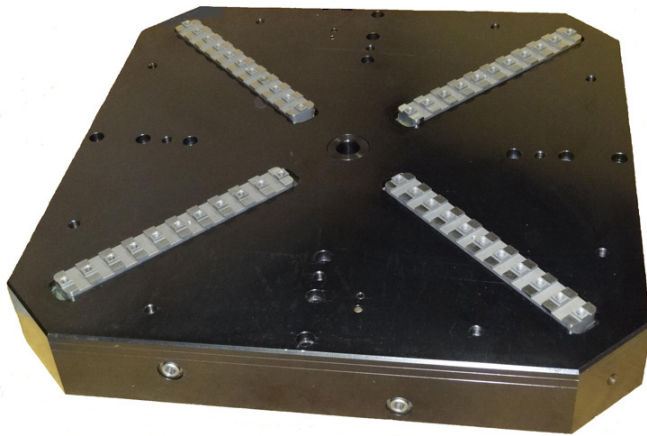
LOW-PROFILE SELF-CENTERING 2, 3, 4, or 6 JAW MECHANICAL AND HYDRAULIC CHUCKS



ACCESSORIES & OPTIONS

- C - Cross-over Plate
 - S - Solenoid Valve
 - H - Hydraulic Supply to Master Jaw
 - A - Air Bleed to Master Jaw
- [Note: Skip this if no option is required.]

For use on VTL's, Machinery Centers,
Positioning Tables



Top: 42" steel body three jaw mechanical
3.625" thick 1,285 lbs.

Left: 42" Steel body four jaw (2) independent
sets of two jaw self centering mechanisms
Quickly and automatically centers parts

Lower: 46" Six jaw aluminum body 3.625"
thick, 1.5" jaw travel 686 lbs.

Benefits of Low Profile;

- Direct mounting to rotab or machine tables with socket head bolt clearance holes
- Center concentricity locating cobore, and key for radial orientation on back side of chuck body
- Aluminum body chucks are anodized
- 100% internally lubricated and mechanically sealed from external swarf, chips, weld spatter, etc.
- Less weight reduces rotating inertia
- Allows for greater part payloads
- Increases Z axis travels
- Allows longer tool clearances
- Our hydraulic chucks Require no additional (height robbing) actuator on the backside of chuck. All hydraulic/mechanical actuation is internal to chuck body

